

ICS 170C



16 Carriers // 16 Injected Chemicals // Retail



FEATURES & SPECIFICATIONS

Inputs
14 High Speed Meter Inputs
4 Ethernet Meters Inputs**

Loadout
2 Loadout Points per System
2 Systems May Run Simultaneously

Control Interfaces
Manual Controls are held within HMI Screen for Start Up and Testing

Outputs
16 Configurable Local Outputs
Up to (2) 16 or 24 Ethernet Valve Panels**
4 Auxiliary Switches

Systems
2 Systems Maximum
16 Products Can Be Recirculated
Ticket Recall and Printing*

Custom Options[†]
Unattended Loadout Bays
Desktop Software
Start/Stop Panel

[†] Additional features will deem the panel as a custom build and billed as such.

* ICS ControlPro® software required.

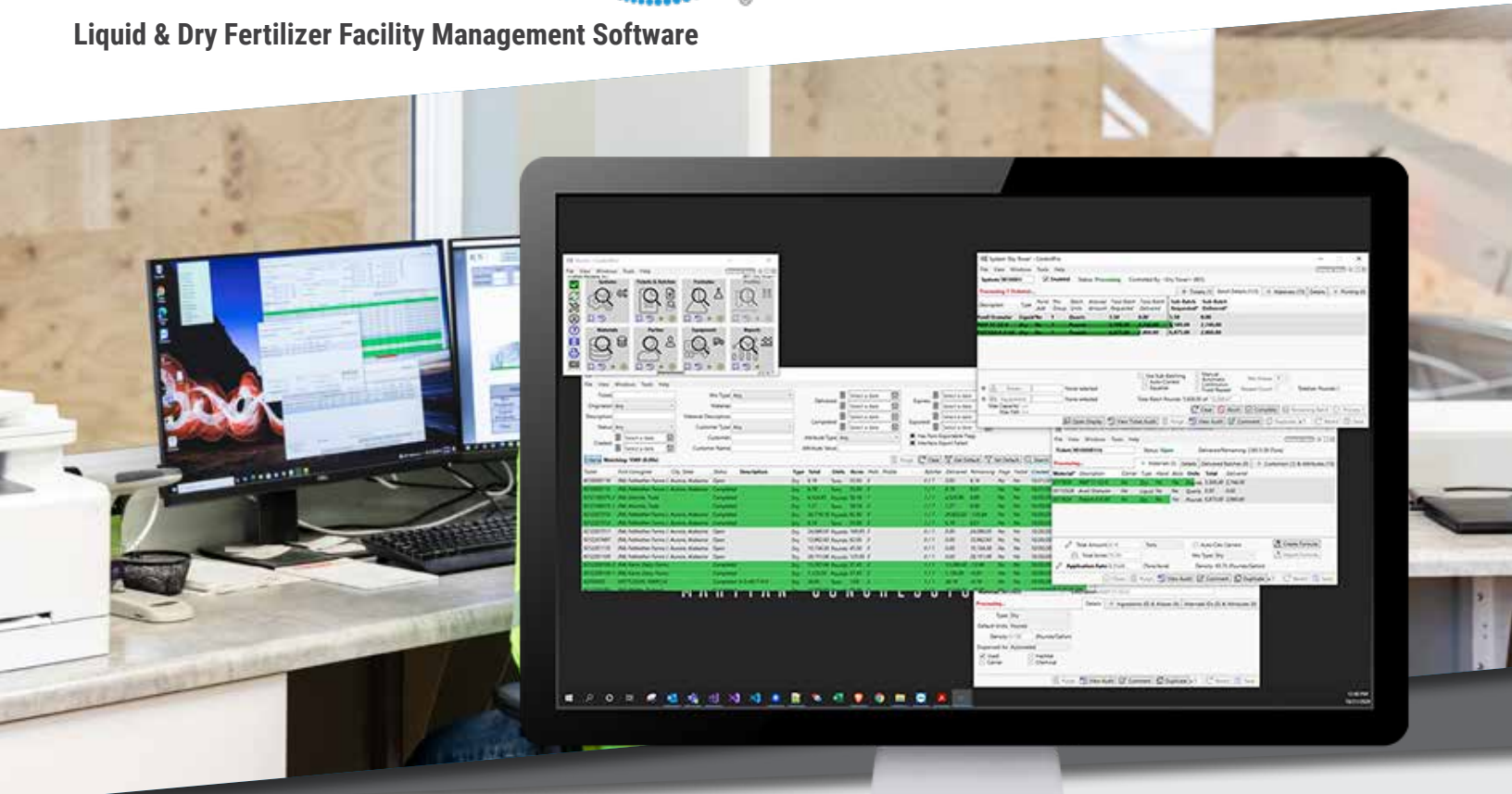
** Ethernet connections require less conduit and install time.

(Actual product count depends on meter type & plumbing.)

ControlPro



Liquid & Dry Fertilizer Facility Management Software



SOFTWARE HIGHLIGHTS



Liquid AND Dry Fertilizer

Manage all your agronomy facilities with the same software whether liquid or dry, retail or wholesale.



Batches & Loads

Split or combine batches as needed for in-field time savings and accurate delivery.



Inventory Management

Use transactions and/or sensors to manage inventory and monitor inventory across locations.



Unattended Loadout

Service customers and/or other locations with 24/7 loadout.



Subscription-Based Software

Stay competitive with the latest software innovations thanks to our PaaS model. Receive updates on the fly.



Agronomy/ERP Integration

Run ICS ControlPro® standalone or interface with 24 different 3rd party software.



Systems Control

Send ticket batches to one or more systems for production and loadout.



Drivers & Equipment

Improve communication and audit trails with drivers and equipment dispatching tools.



Billing & Customer Service

Increase billing and load accuracy while also improving communication with customers.



Weights and Measures Approved

The only industry software NTEP Certified with NTEP Devices. NTEP CC: 23-053